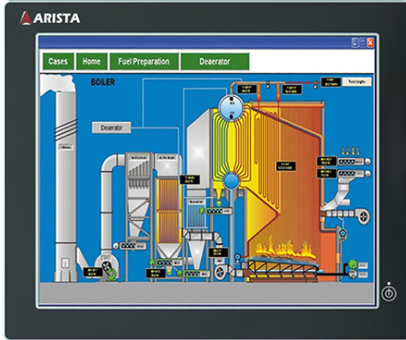




ARP-2919AP Series

Panel Mount Panel PC with 19" 5-Wire Resistive Touch



Features

- 19" LCD, 1280 x 1024 Resolution
- Very High Brightness LCD (1,000 nits)
- Flush Bezel 5-Wire Resistive Touchscreen
- Aluminum or Stainless-Steel Bezel
- Intel Core i7 Mobile / Intel 6th Gen Core-I CPU
- Up to 16GB DDR3/ Up to 32GB DDR4 SO-DIMM
- Optional 2.5" SSD
- Dual Gigabit Ethernet
- 2x RS-232/422/485 BIOS Selectable
- 4 x USB 2.0, 2 x USB 3.0

Specifications

Model Name	ARP-2919AP-G01	ARP-2919AP-H01
LCD Display		
Display Size (Diagonal)	19.0 inch	19.0 inch
Resolution	1280 x 1024	1280 x 1024
Backlight Lifetime (Hours)	50,000	50,000
Visual Characteristics		
Colors	16.7 million	16.7 million
Aspect Ratio	5:4	5:4
Viewing Angle (V/H)	160° / 170°	160° / 170°
Contrast Ratio	1000 : 1	1000 : 1
Brightness	1000 nits	1000 nits
Touch Screen		
Technology	5 Wire Resistive	5 Wire Resistive
Interface	USB	USB
Front Bezel		
NEMA 4	Aluminum	Aluminum
NEMA 4x	Stainless Steel	Stainless Steel
System		
CPU	Intel i7-3612QM CPU	Intel i7-6700T CPU
Chipset	Intel QM77	Q170
Memory	Up to 16GB DDR3	Up to 32GB DDR4
Video Controller	Intel HD Graphics 4000	Intel® Gen9 Intel Graphics
External Video Output	DVI, HDMI, Display port	DVI, HDMI, Display port
Storage Option	2.5" SATA SSD	2.5" SATA SSD
CFast Card	N/A	N/A
Keyboard / Mouse	USB / PS2	USB / PS2
Audio	Line in, Line Out, Mic-In	Line in, Line Out, Mic-In
Watchdog Timer	Programmable 1~255 sec	Programmable 1~255 sec
Remote Boot	PXE	PXE
Expansion Slot	1 x PCIe x8	1 x PCIe x16
I/O Communication		
USB Port	4 x USB 2.0, 2 x USB 3.0	2 x USB 2.0, 4 x USB 3.0
Serial Port	2 x RS-232/422/485	2 x RS-232/422/485
IEEE 1394	N/A	N/A
LAN	2 x Gigabit	2 x Gigabit
Parallel	N/A	N/A
GPIO	N/A	N/A
Smart Battery		
External Smart Battery	N/A	N/A
OS Support		
OS Support	Windows XP, 7, 8.1, 10	Windows 7, 8.1, 10
Power/Thermal Specs		
Power Requirement (Max)	24VDC / 4.61A	24VDC / 4.61A
Power Consumption (Max)	111 W	111 W
Recommended Power Supply	158 W	158 W
Heat Dissipation	378 BTU/hr	378 BTU/hr
Physical Information		
Mounting	Panel Mount	Panel Mount
Net Weight	35 Lbs / 15.80 Kg	35 Lbs / 15.80 Kg
Dimension (W x H x D)	18.15 x 15.16 x 4.20 inch 461.0 x 385.0 x 106.8 mm	18.15 x 15.16 x 4.20 inch 461.0 x 385.0 x 106.8 mm
Recommended Cutout Dimension (WxH)	16.55 x 14.11 inch 420.6 x 358.6 mm	16.55 x 14.11 inch 420.6 x 358.6 mm
Environmental		
Operating Temperature	0~35°C (32~95°F)	0~35°C (32~95°F)
Storage Temperature	-20~60°C (-4~140°F)	-20~60°C (-4~140°F)
Relative Humidity	0~95%	0~95%
IP/NEMA Rating	Bezel meets NEMA 4/4X requirement	Bezel meets NEMA 4/4X requirement
Certification	N/A	N/A

Ordering Information

Item	ARP-2919AP-G01-H31	ARP-2919AP-G01-H35
LCD Display	19" VHB LCD / 1280 x 1024	19" VHB LCD / 1280 x 1024
Touch Screen	5-Wire	5-Wire
Bezel	Aluminum	Stainless Steel
CPU	i7-3612QM	i7-3612QM
Memory	16GB DDR3	16GB DDR3
Storage	2.5" SATA SSD	2.5" SATA SSD
Remote Boot	N/A	N/A
Power Supply	110/220VAC Input DIN-Rail	110/220VAC Input DIN-Rail

Item	ARP-2919AP-H01-H31	ARP-2919AP-H01-H35
LCD Display	19" VHB LCD / 1280 x 1024	19" VHB LCD / 1280 x 1024
Touch Screen	5-Wire	5-Wire
Bezel	Aluminum	Stainless Steel
CPU	i7-6700T	i7-6700T
Memory	32GB DDR3	32GB DDR3
Storage	2.5" SATA SSD	2.5" SATA SSD
Remote Boot	N/A	N/A
Power Supply	110/220VAC Input DIN-Rail	110/220VAC Input DIN-Rail